

MBD4057-0805-2 Planar Tunnel Diode



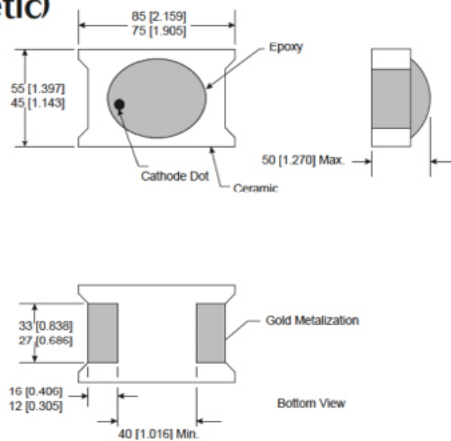
Technical Characteristics

Product Features
Rugged Germanium Planar Construction
Excellent Temperature Stability
No DC Bias Required
Wide Video Bandwidth
MIL-STD-190500 & 883 Qualified

Product Description
EclipseMDI MBD4057-0805-2, is a zero-bias, rugged Planar Tunnel Diode constructed with Germanium Planar. This tunnel diode exhibits excellent temperature stability, wide video bandwidth and is MIL STD-190500 & MIL-STD-883C qualified.

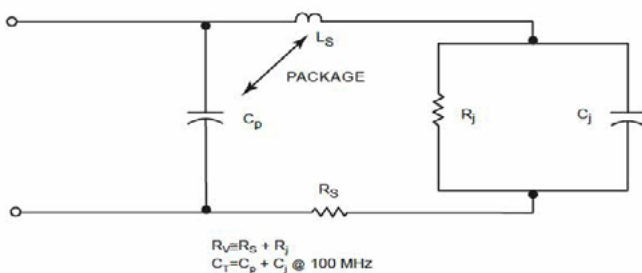
Maximum Ratings
Storage Temperature.....-65° to +125°C
Operating Temperature.....-65° to +110°C
Input Power Handling.....+17dBm CW or 3 ERG spike
Soldering Temperature.....+160° C

0805-2 (non-hermetic)

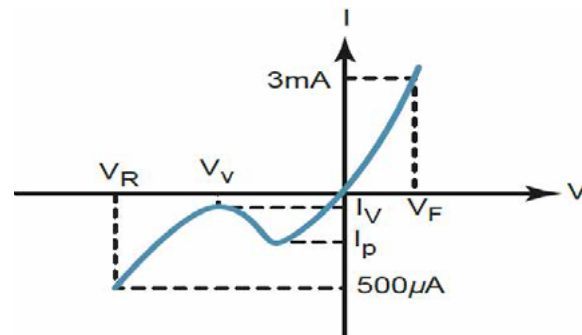


Parameters	Specifications				
	Conditions	MIN	Typical	MAX	UNITS
I_p		400		500	μA
C_j	$V_r = V_v$, $f = 100 \text{ MHz}$.30	pF
$K[Y]$	$P_{in} = -20 \text{ dBm}$ $R_{Load} = 10 \text{ K}$, $f = 10 \text{ GHz}$		275		mV/mW
R_v			65		Ω Ohms
I_p/I_v		2.5			
V_r	$I_f = 500 \mu A$		400		mV
V_f	$I_f = 3 \text{ mA}$			120	mV

Diode equivalent circuit



Back diode parameters



About EclipseMDI

ECLIPSE Microdevices is located in San Jose, California. ECLIPSE has been developing high performance analog semiconductors for use in wireless radio frequency (RF), microwave, and millimeter wave for commercial and industrial applications. ECLIPSE has formed a strategic alliances - with foundries that features leading state-of-the-art process technologies and with manufacturing facilities for high-volume production of innovative RFIC's.

Product Export Classification

ECCN: EAR 99 (unless otherwise specified)
HTS: 8542330000